

PROJECT PROFILE



Landscape Design
Environmental Planning, Visual Impact Assessment
Expert Witness
Landscape Sketch Design
Landscape Masterplanning
Play Area Design
Sustainable Development
The creation of Health promoting Green Infrastructure Parks
and open Spaces

Bredonside House
Main Road
Crothorne
Pershore
Worcestershire
WR10 3NE

Tel: 01386 553350
Email: enquiries@tisdallassociates.co.uk
Website: www.tisdallassociates.co.uk
See also: www.healthparks.co.uk

Introduction

Emanating from Tisdall King, which was itself formed in 1998, Tisdall Associates is a Registered Practice of the Landscape Institute. We provide landscape design and environmental consultancy services on a wide range of projects and scales, from the preparation of Landscape and Visual Impact Assessment and the preparation of landscape masterplans to small bespoke design schemes including housing developments, Retirements Homes, Courtyards and Public Squares etc. Unique among Landscape Architects, we have also draw on qualifications and experience in Public Health, developing schemes which are sustainable in terms of landscape, biodiversity and the environment, but which also embrace Social Sustainability in terms of Physical Health and Mental Wellbeing; an increasingly important consideration as costs of ill health escalate, and those looking for new homes become increasingly aware of the need to live in health promoting environments.

The Practice brings experience in private practice, local authority and commercial development, affording useful insight and liaison skills for both local authority and private clients. As Managing Director, Richard Tisdall brings over 20 years in Landscape Design and Management, as well as a Masters In Public Health, often acting as Expert Witness in Planning Appeals and Inquiries.

Practice Experience

As a Practice we have experience working on a varied portfolio covering environmental assessment, strategic landscape proposals, urban design and public realm, design statements and codes, sustainable urban drainage, habitat creation and children's play & sport provision.

One of the practice's strengths is the ability to develop a vision for the public realm at an early stage, applying current good practice design principles that are innovative and achievable. This can be seen in projects carried out for a range of residential developments across the country.

Project inputs invariably cover the full spectrum of stages from design concept through to implementation. As such we have developed good working relationships with planning authorities and other organisations; we also bring experience in community consultation.

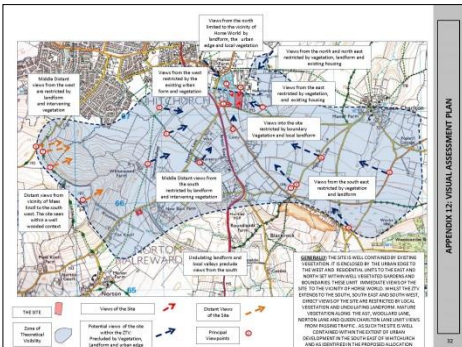
Clients over the years have included Bovis Homes, Bloor Homes, Taylor Wimpey, Persimmon, Bovis Retirement Care, The Duchy of Cornwall, Barratt Homes, David Wilson Homes, West Midland Housing Association, as well as Architects, Planning Consultancies and private clients. We are currently involved in a range of high-profile projects that are focused on establishing a hierarchy of high quality public space at the heart of new development. Working within a pragmatic commercial framework, our aim is to deliver innovative and meaningful designs that are fully integrated within the design strategy for a particular scheme, and respond carefully to local character and design criteria.

The following sheet and images below represents examples of the range of projects undertaken by the practice.





The landscape character assessment of the area was reviewed and the key characteristics applied to the strategic design proposals



PROJECT SUMMARY

The Practice undertakes both preliminary and detailed landscape and visual impact assessments. The Preliminary Assessment can be used to identify opportunities to optimise development often to assess the potential of an Option, or before an application is made. It can be used to indicate potential developable areas while mitigating landscape and visual impact. Detailed assessments are carried out in compliance with GLVIA ed 3, and in support of an Outline or Detailed Application. In developing the Landscape Strategy and Masterplan, Tisdall Associates works closely with architects and engineers to address the requirements for Sustainable Development. The landscape proposals are based upon a detailed landscape and ecological assessment of the site, and identifies opportunities for protection, mitigation and enhancement of natural assets. Schemes can include the creation of a range of habitats including sustainable drainage ponds & swales, meadow grassland, woodland and scrub, in addition to open spaces and parks, for recreation health and wellbeing.



Landscape, Biodiversity and Health Strategies help to establish at an early stage the landscape design, health and ecological issues as an integral part of a proposed development. Strategies can be used to support planning applications to demonstrate compliance with Policy objectives and aspirations. They are also "Good Design"

These strategies undergird the creation of Landscape Masterplans, and establish the overall design concept.

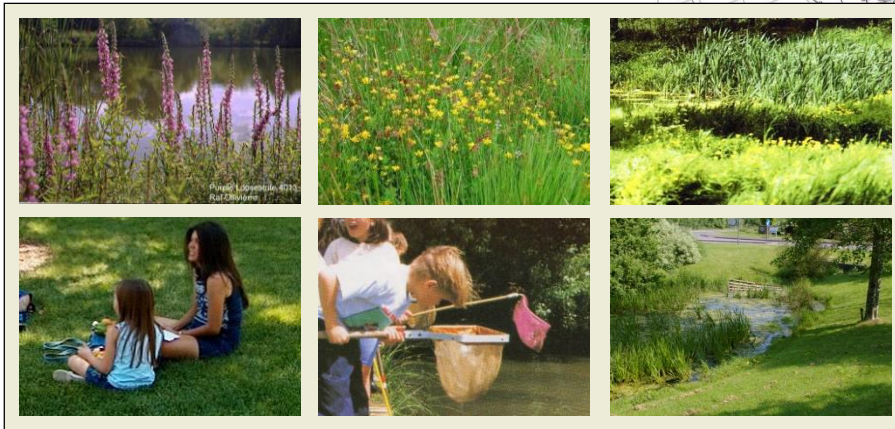
Key issues that have been identified include:

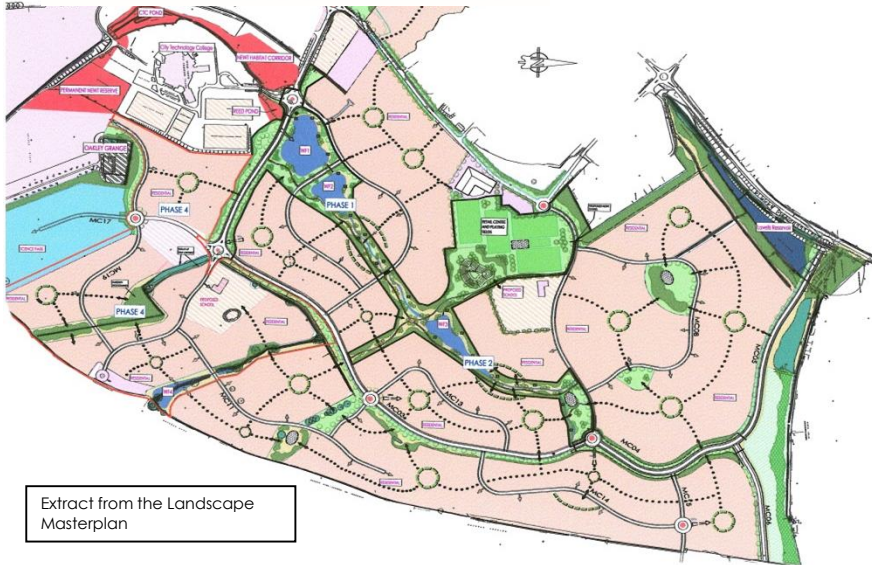
- Design
- Landscape character
- Protection of existing landscape features such as trees & hedgerows
- Ecological issues such as protected species and important habitats
- Sustainable drainage principles
- The use of the Tisdall Associates Design for Health Assessment Model to optimise opportunities to utilize the open spaces for the prevention and treatment of avoidable ill-health. This includes, Accessibility, Mental Illness, Physical Activity for all sectors of society and steps to reduce environmental risk factors.



PIN BROOK COUNTRY PARK FRAMEWORK PLAN

A typical Landscape Framework Plan used to illustrate the overall landscape and biodiversity principles for a development. The identified principles are then expanded upon in more detail and illustrated using photographic images, sketches, sections and plans as appropriate.





A new stream gently meanders down a small valley and incorporates a series of stone cascades and reed beds. As well as providing opportunities for a range of flora and fauna, the stream helps to dissipate water flow during wet periods and provides some vegetative treatment of the runoff within the larger reed beds before it enters a series of lakes further down.



A water circulation system was installed to ensure that a flow of water through the stream is maintained throughout the year.

PROJECT SUMMARY

This is a substantial urban extension to the south-west of Corby, comprising c.3000 new homes over an area of 175 hectares. The development also includes the provision of community facilities, playing fields, retail centre and school.

Central to the scheme was the design of a series of balancing lakes and a connecting stream. These features were required to mitigate and improve the quality of surface storm water in order to protect an existing important watercourse downstream.

Other objectives were also to provide amenity and habitat creation benefits, including newt habitat creation. This project involved close liaison with the project civil & hydraulic engineers to ensure that flood capacity and functionality requirements were met without comprising the overall design and habitat mitigation objectives.

Delivery of the strategic landscape scheme through to adoption including the production of Management Plans was supervised and monitored by the Practice. The landscape areas are to be adopted by Corby Borough Council.





Housing Layout and Landscaping Shepton Mallet



Urban Space Bredon Gloucestershire



Informal Spaces Wheatpieces Nr Tewkesbury



Sustainable Drainage Scheme Corby



woodland Walk with informal Open Space: Ashton Nr Bristol



Formal and Informal Strategic Landscaping



Housing developments require a diverse appreciation of internal spaces, landscape treatments, biodiversity and habitat creation, landscape and amenity, within the integrated context provided by planning, architecture, and engineering. Tisdall Associates is highly experienced in producing cost effective schemes which are both attractive and varied and appropriate to each location and situation.

Sports and Play Provision



PILLMERE, SALTASH

A recently completed scheme in Saltash catering for a wide range of ages and abilities.

The play area was carefully designed to integrate within its landscape setting, and existing trees were successfully incorporated into the scheme.

Attractive and challenging play areas that provide both prescribed and lateral play opportunities are important factors in helping children of different abilities learn how to engage with one another. The careful design of play areas can have cohesive social benefits that bring parents as well as children together.

The space provides an aesthetically pleasing focal point for the development



View of central area

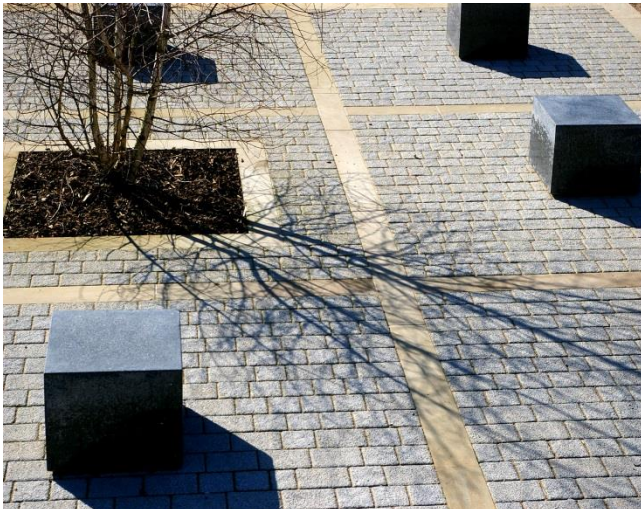


BLACKBIRD ROAD, CENTRAL SQUARE

This recently completed 'mini-park' is located at the centre of a housing development in Leicester. High quality materials and varied planting were used to create an aesthetically pleasing green space for residents and an informal play facility.

A sculptural piece of play equipment provides for a range of play activities. Sculptural seats provided a centre piece for the space, arranged around a multistem birch tree.

The entire space is enclosed by railings with brick piers and a row of specimen plane trees.



BLACKBIRD ROAD, PLAY AREA

A second public open space forms a small 'dedicated' play area, with robust and attractive equipment set within an attractive landscape setting. The play area is located on a sloping site affording some interesting changes of level that were accommodated through the use of 'stockade' style timber walling. Sculptural grassed mounds were created as informal play banks.



Places for Social Interaction



Views of the Natural Environment

PROJECT SUMMARY

Primary research has demonstrated that the quality of the built environment, and the surrounding natural landscape can have a positive bearing upon the health and well being of local communities.

Through its experience in Public Health, Tisdall Associates are able to bring together, within a cogent Masterplan, the components of the landscape which have been demonstrated through research to benefit health and well being. This, in addition to landscape and environmental factors, provides a development which addresses the Social dimension of sustainability, and creates a context for a health promoting development. This approach to design both benefits new residents but also the wider community. It also provides discerning developers with that USP, health and well being, to attract potential purchasers who might be comparing a range of schemes in an area.



Places for Quiet Reflection



Engagement with the Natural Environment



Attractive Landscape Design



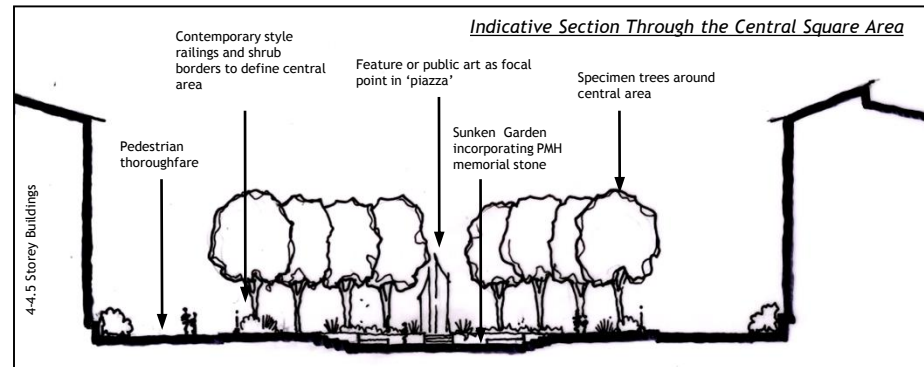
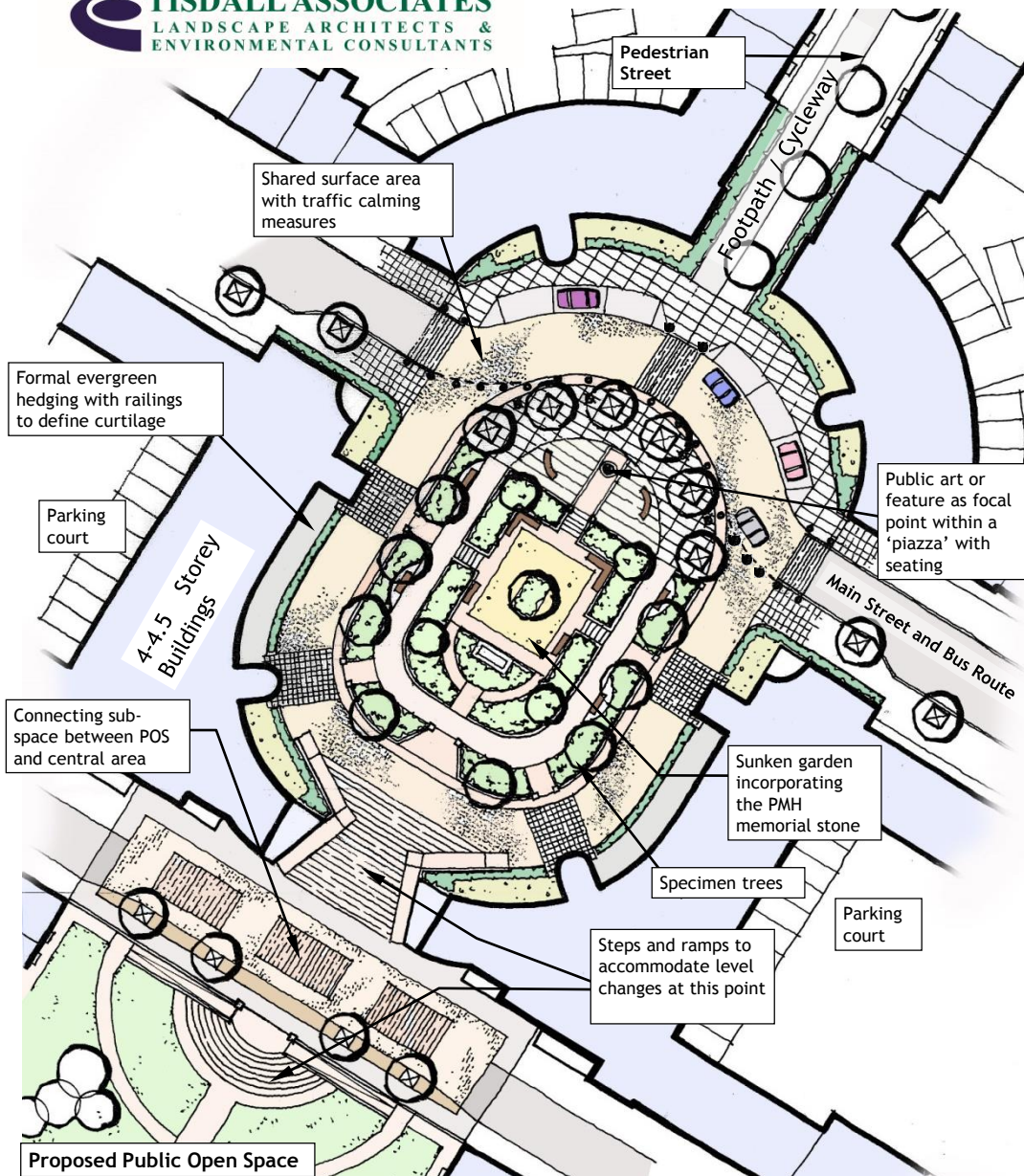
Active Travel



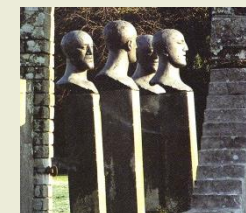
General and Inclusive play



Physical Activity for all ages and abilities



Avenues:
Tilia cordata 'Greenspire'



Within the Central Square there is an opportunity to incorporate a focal point sculpture with a degree of vertical emphasis that would mark the junction of the key axes. In addition public art could be incorporated within street furniture such as railings and paving.



Urban squares:
Platanus x acerifolia
Fraxinus angustifolia 'Raywood'
(pictured)

High quality redevelopment of a former hospital on the edge of Swindon incorporating key public spaces.

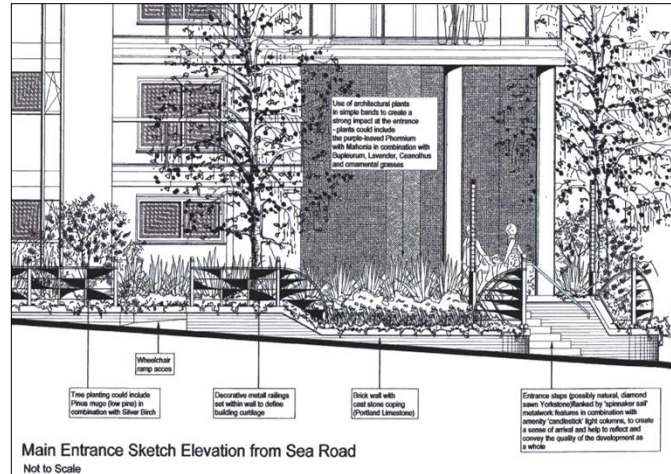
The central square shown here forms the centrepiece of the scheme incorporating formal gardens and public art elements.

(Images for Illustrative Purposes Only)





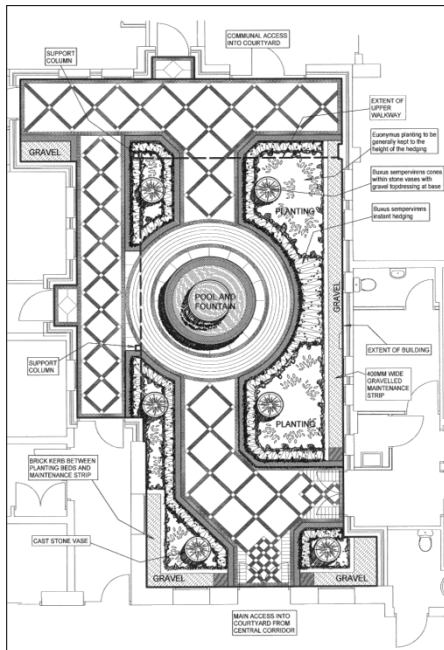
Retirement Care Eastbourne



Honeycombe Chine, Bournemouth

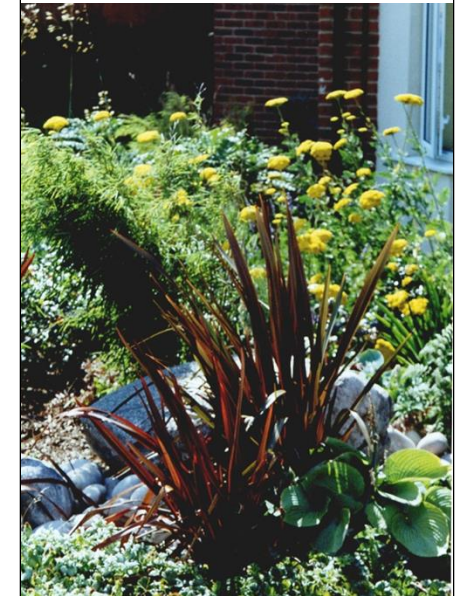


Terracotta pots, boulders, cobbles, glazed ceramic balls and architectural planting for a north facing garden, Westcliff



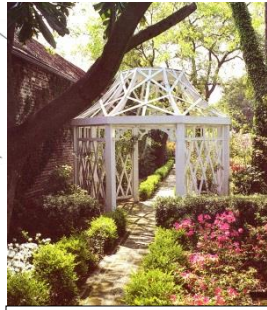
Brompton Court Bournemouth. View of the large, sculptural stone planters and fountain, and the formal planting of box hedging and cones.

Bold perennial planting with accent plants and decorative boulders, Westcliff

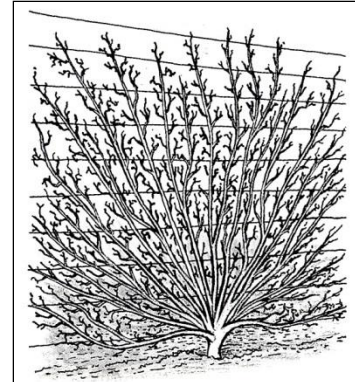


Decorative Planting, Bournemouth





A gazebo such as this could provide a notable feature along the central axis



Typical view of an espalier-trained shrub or fruit tree which can be both functional and decorative

DESIGN AIMS & OBJECTIVES

The aim of the proposals is to attempt to recreate some of the qualities associated with a substantial Victorian walled garden. The key objectives to achieve this aim are as follows:

- Restoration of existing paths
- Repair of the existing walled boundary where necessary and appropriate using salvaged materials and traditional building techniques
- Introduction of typical garden feature associated with a Victorian walled garden, such as a herb garden, orchard, box hedging and espalier fruit trees along the wall
- Provision of attractive communal garden space and features of interest
- Retention of existing trees and vegetation where possible



Carefully chosen reproduction Victorian items such as plant pots and containers could add a sense of authenticity and attention to detail



The use of classic box hedging introduces a formal structural element to the garden and would help to define the various garden compartments



A checkerboard pattern such as this could be created using paving in conjunction with a scented herb such as lemon thyme which would release scent if crushed underfoot



View of tiled footpath to farmhouse to be restored. Wherever possible, original features would be retained and restored



A series of timber or wireframes could be used to establish a dramatic rose walk feature



A timber obelisk would make a notable centrepiece